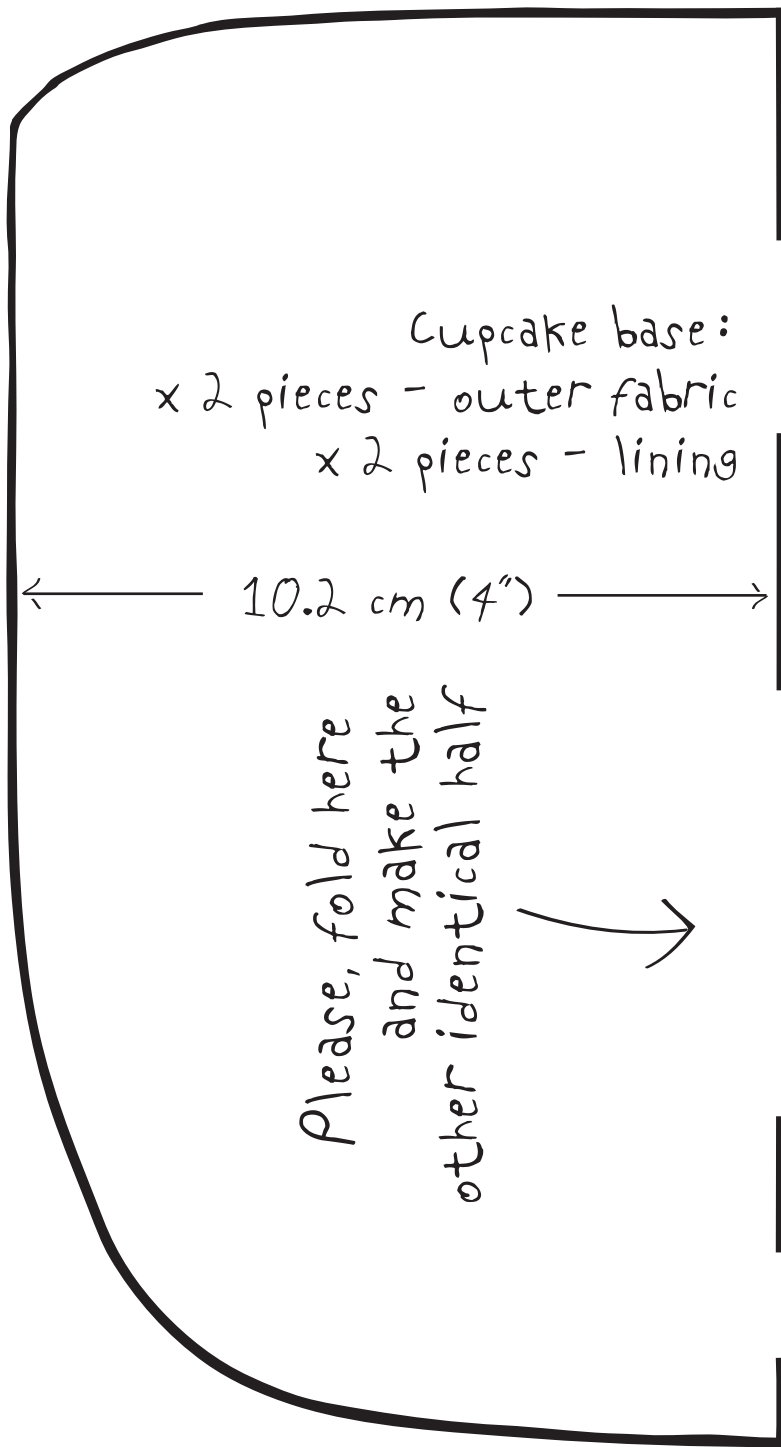
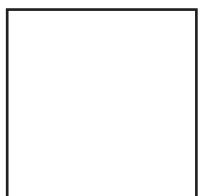
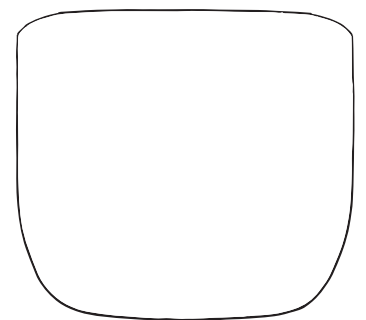


Ellie After Cupcake Purse Pattern ✂



After printing and folding, it should look like this.



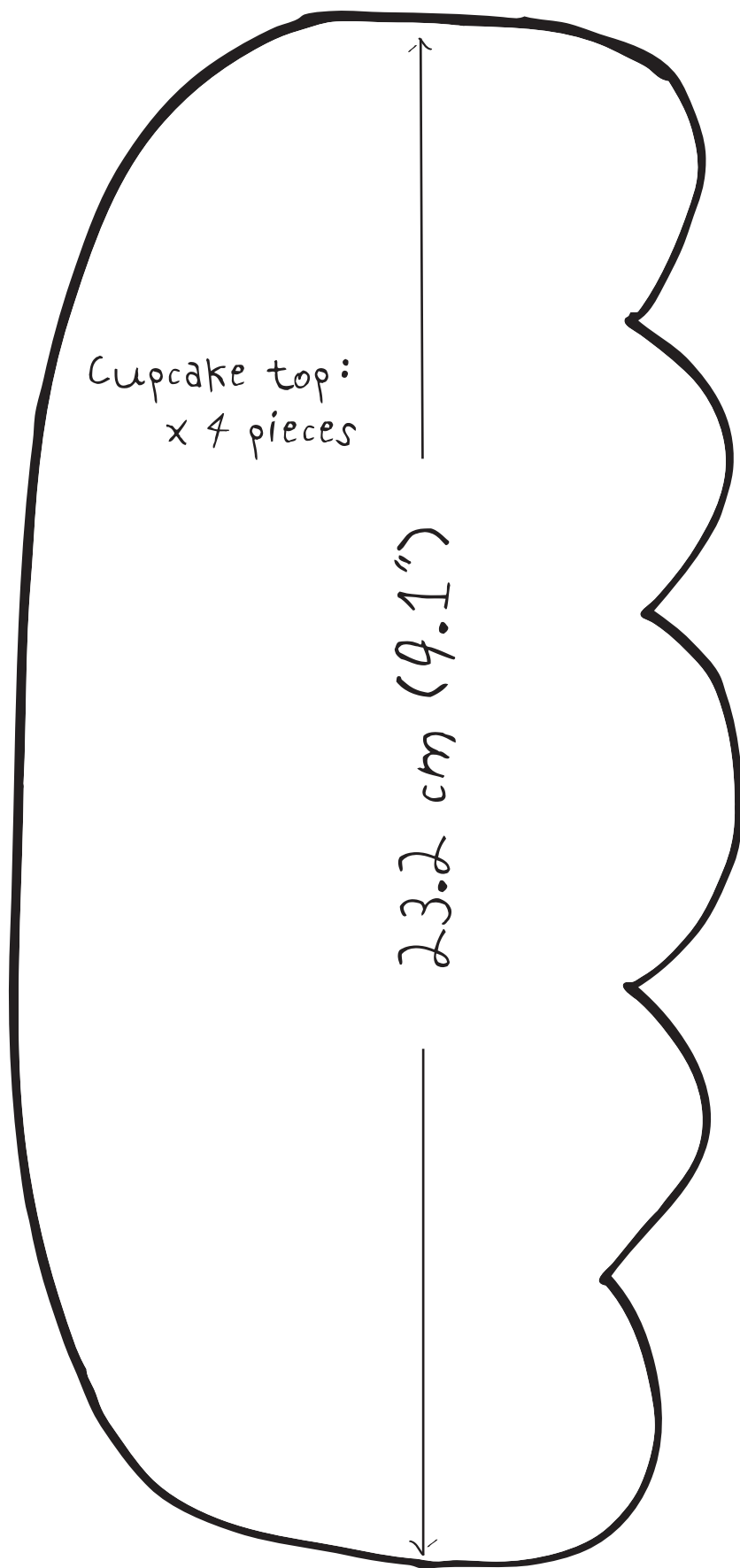
1 inch test square, please check after printing



1 cm test square, please check after printing

Important: The seam allowances are included in this pattern

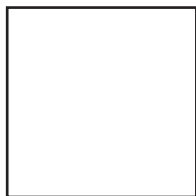
Ellie After Cupcake Purse Pattern



Cupcake top:
x 4 pieces

23.2 cm (9.1")

Important: The seam allowances are included in this pattern



1 inch test square,
please check after printing



1 cm test square,
please check after printing